

RecMic II Configuration Guide: Microsoft Teams

Nowadays, chat-based workspaces are very common. Using the Rm-4010P in Microsoft Teams captures clear audio. Clearer audio results in more complete and accurate transcriptions. You can be heard and understood clearly on calls and in your meetings, even if you happen to be in a not so quiet space. You can optimize the RecMic II's functions, or short keys, to increase your productivity and save time.



Tutorial

Microphone stand- Hands free dictation

The RecMic series comes with a dedicated microphone stand. The product can be placed on the stand for hands-free dictation. This is especially useful when using your RecMic as a USB microphone on Teams. Simply place into the stand with the front of the unit facing you. Ensure that it is placed near to you to ensure the quality of the recording.

Recording Mode	Recording Mode		
	Directionality	Noise Cancellation	Intelligent Auto Mode
Hands-free Mode	OFF	OFF	ON

Recording Mode

In order to achieve the best results in Teams, it is important that you select the preset recording mode which matches to your environment. The recording mode controls the directionality and the noise reduction level during recording. It is recommended that users use the default mode in a quiet home environment. However, for situations where there is more background interference, it is advised to use the RecMic Configuration Tool found later in this guide to adjust directionality. It is worth noting that increasing the RecMic's hardware noise cancellation may work against the in-built cancellation function of teams. Therefore, you may wish to disable or reduce the noise cancellation settings in Teams itself.

LED Color	Recording Mode	Settings		
		Directionality	Noise Cancellation	Intelligent Auto Mode
Blue	Quiet Environment (Default)	OFF	OFF	OFF
Green	Noisy Environment for Speech Recognition	HIGH	MID	OFF
Red	Noisy Environment for Classic Dictation	HIGH	HIGH	OFF
Purple	Customized setting (ONLY via SDK)	OFF, LOW, MID, HIGH	OFF, LOW, MID, HIGH	ON/OFF

Directionality:



Noise cancellation:



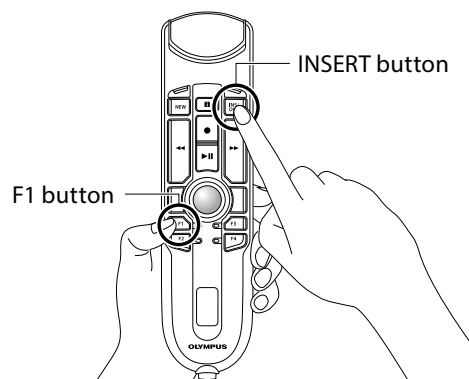
Intelligent Auto Mode

This feature continuously monitors the input level and variably adjusts the recording level to the optimal level.

- Input level too low: Increases recording level
- Input level too high: Reduces recording level

How to Change Modes.

Press the F1 and INSERT button for more than 5 seconds as shown. By repeating this operation, it will toggle between the modes.



RecMic Configuration Tool

Download link:

https://dl-support.olympus-imaging.com/odms_download/rct-olympus-recmic_configuration_tool/en/

Although it is recommended that users use the default settings, you can adjust your RecMic based on your recording environment for the best results. RecMic Configuration Tool is software that supports the workflow by using RecMics to control desktop applications. With this software you can configure RecMic settings and assign functions that control applications to RecMic buttons. The application is free and can be downloaded from each local Olympus Websites.

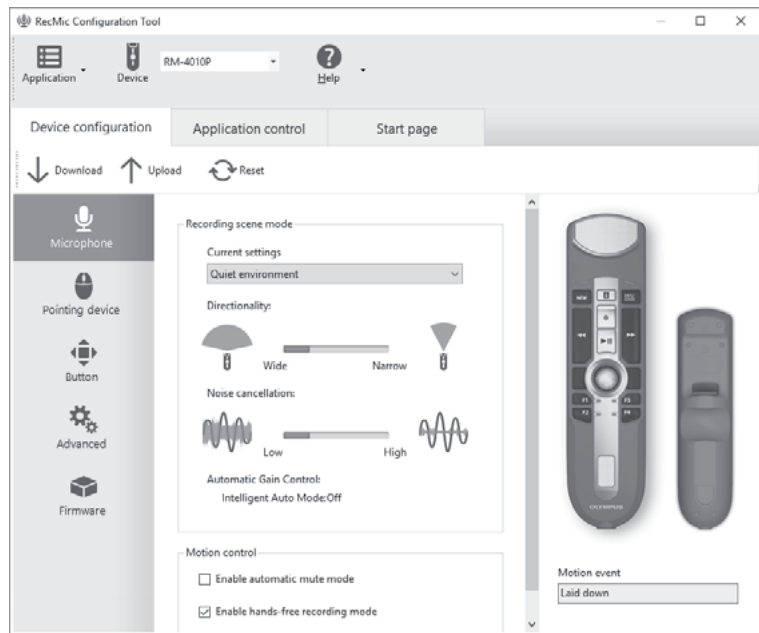
The tool supports the following features:

Device Configuration

- Recording Mode Setting
- Mouse Control Setting
- Custom Keyboard Setting
- Firmware Update
- Other General Setting

Application Control

- Edit Command
 - Start Application Command
 - Text Command
 - Shortcut Command
 - Waiting Command
- Keyboard Template



In the Device Configuration tab, you can configure various settings for the microphone, mouse, and buttons. When you start RecMic Configuration Tool, the current settings of the connected device are automatically downloaded. Only the options that can be used on the connected device are shown in the screen. You can customize the behavior of the device to suit your preferences by uploading the changed settings to the device.

In the Application Control tab, you can assign various functions to each button, such as to start up specified applications, to send keyboard shortcuts or text to applications. Furthermore, this software also supports commands for controlling Dragon speech recognition software from Nuance. By setting the functions assigned to each button to different applications, you can execute complex operations easily and quickly by just clicking RecMic buttons.

Device configurations and application control configurations can be saved in files. You can reproduce these settings on other computers by importing these files.