

RecMic II Configuration Guide: Microsoft PowerPoint

Making PowerPoint presentations can certainly take some time. Whether you are pre-recording your presentation or planning to present live, a high-quality recording device is essential. The RecMic II from Olympus captures natural speaking voices with its noise filtration technology. Easily record the audio for your presentation without breath or outside noise as well as dictate your slide notes without having to type. Increasing your productivity within Microsoft PowerPoint is easy. Assign functions, or short-keys, to the RM-4010P to make creating your presentation more efficient.



Tutorial

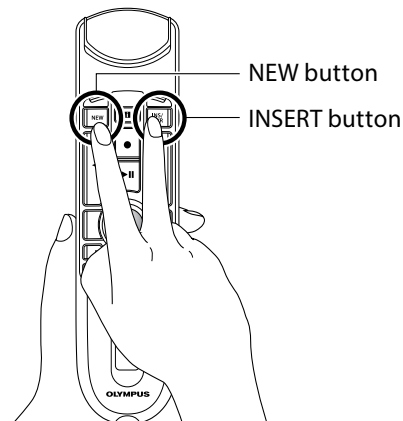
Button Modes

The RecMic series comes with preset button modes which are configured for Windows.

Position	Preset Button Modes	Description
F1	Olympus Mode	Default setting used for Olympus Software.
F2	Custom Mode	Custom setting is offered via the RecMic Configuration Tool.
F3	Dragon Mode	Button setting is optimized for Dragon Software from Nuance.
F4	Windows Mode	Button setting is optimized for Windows Speech Recognition.

How to Change Modes.

Press the NEW and INSERT button as you see in on the right. LEDs from F1 to F4 will flash for 15 seconds. During this time, choose your preferred preset button modes from F1 to F4. For windows select F4.



Recording Mode

In order to achieve good recording quality for your PowerPoint narration, it is important that you select the preset recording mode which matches to your environment. The recording mode controls the directionality and the noise reduction level during recording. Especially during speech recognition, the background noise should be kept at a minimum level. It is recommended that users use the default mode.

LED Color	Recording Mode	Settings		
		Directionality	Noise Cancellation	Intelligent Auto Mode
Blue	Quiet Environment (Default)	OFF	OFF	OFF
Green	Noisy Environment for Speech Recognition	HIGH	MID	OFF
Red	Noisy Environment for Classic Dictation	HIGH	HIGH	OFF
Purple	Customized setting (ONLY via SDK)	OFF, LOW, MID, HIGH	OFF, LOW, MID, HIGH	ON/OFF

Directionality:



Noise cancellation:



Intelligent Auto Mode

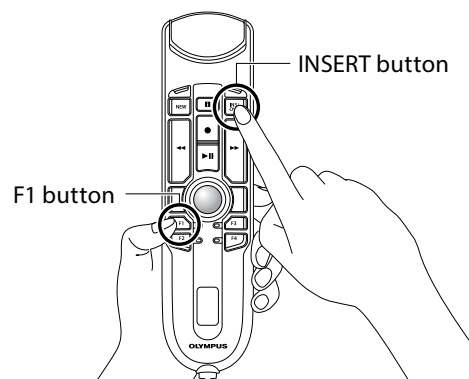
This feature continuously monitors the input level and variably adjusts the recording level to the optimal level.

Input level too low: Increases recording level

Input level too high: Reduces recording level

How to Change Modes.

Press the F1 and INSERT button for more than 5 seconds as shown. By repeating this operation, it will toggle between the modes.



RecMic Configuration Tool

Download link:

https://dl-support.olympus-imaging.com/odms_download/rct-olympus-recmic_configuration_tool/en/

Although it is recommended that users use the default settings, you can adjust your RecMic based on your recording environment for the best results. RecMic Configuration Tool is software that supports the workflow by using RecMics to control desktop applications. With this software you can configure RecMic settings and assign functions that control applications to RecMic buttons. The application is free and can be downloaded from each local Olympus Websites.

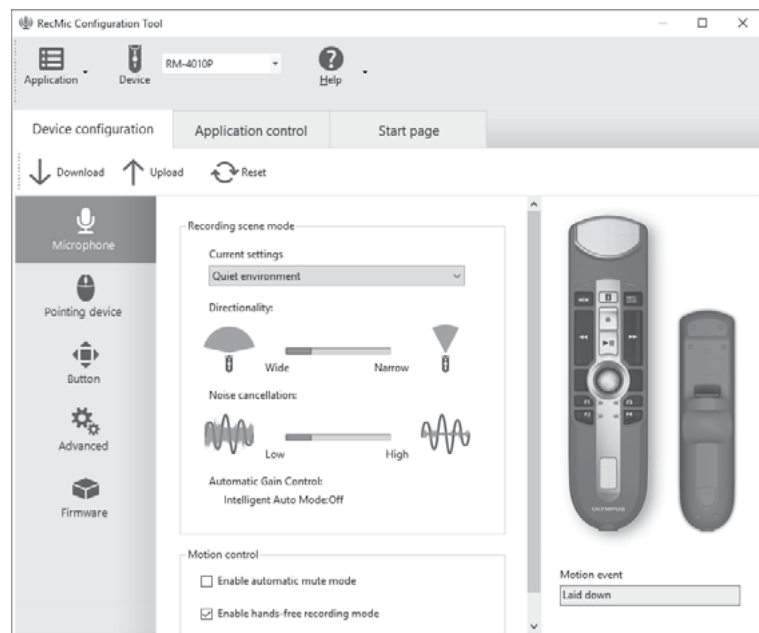
The tool supports the following features:

Device Configuration

- Recording Mode Setting
- Mouse Control Setting
- Custom Keyboard Setting
- Firmware Update
- Other General Setting

Application Control

- Edit Command
 - Start Application Command
 - Text Command
 - Shortcut Command
 - Waiting Command
- Keyboard Template



In the Device Configuration tab, you can configure various settings for the microphone, mouse, and buttons. When you start RecMic Configuration Tool, the current settings of the connected device are automatically downloaded. Only the options that can be used on the connected device are shown in the screen. You can customize the behavior of the device to suit your preferences by uploading the changed settings to the device.

In the Application Control tab, you can assign various functions to each button, such as to start up specified applications, to send keyboard shortcuts or text to applications. Furthermore, this software also supports commands for controlling Dragon speech recognition software from Nuance. By setting the functions assigned to each button to different applications, you can execute complex operations easily and quickly by just clicking RecMic buttons.

Device configurations and application control configurations can be saved in files. You can reproduce these settings on other computers by importing these files.

Record a Slide Show with Narration and Slide Timings

Download link:

<https://support.microsoft.com/en-us/office/record-a-slide-show-with-narration-and-slide-timings-0b9502c6-5f6c-40ae-b1e7-e47d8741161c#:~:text=On%20the%20Insert%20tab%2C%20in,sound%2C%20and%20then%20click%20OK>