



SUBJECT: DS-2500 Firmware v1.01 updating instructions

PURPOSE: To provide the procedures for updating the DS-2500 firmware to v1.01.

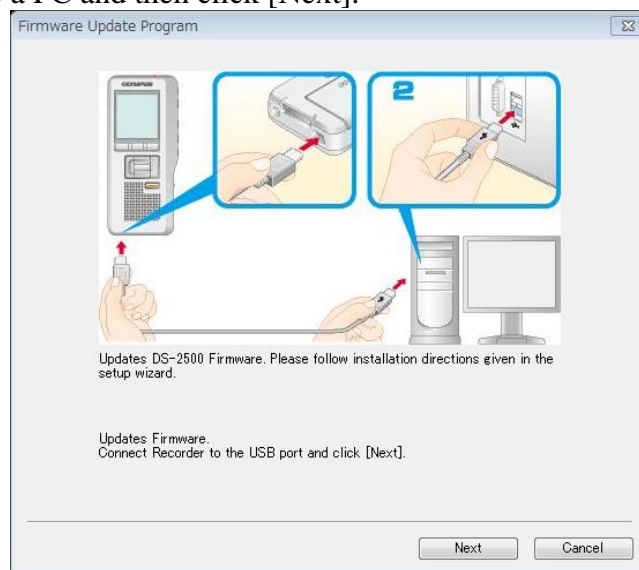
GENERAL INFORMATION: This firmware fixes an issue that causes a Cannot Charge error to appear during charging when the battery is nearly full.

WARNING: During the firmware update process, the DS-2500 will be updated twice. Once to update Sub CPU and again for the Main CPU.

DO NOT disconnect the DS-2500 from the PC until you click the [Finish] button which will appear at the very end of the update wizard.

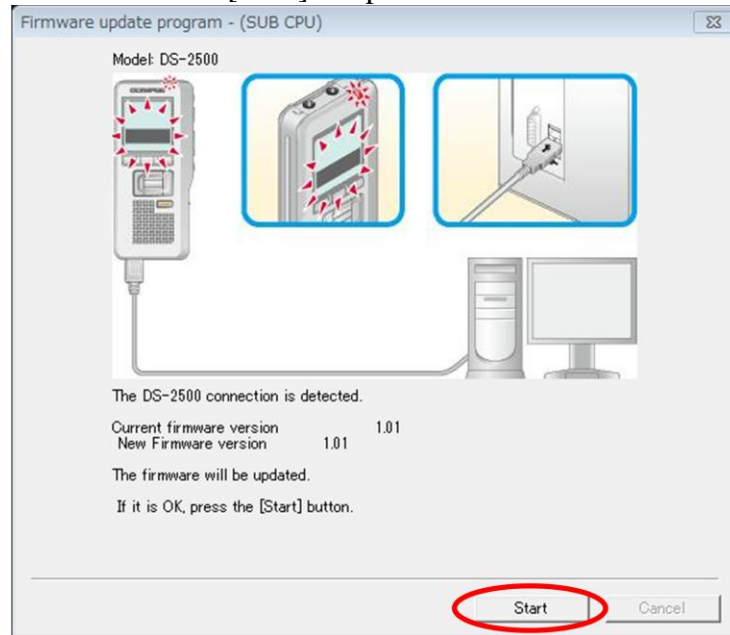
Update procedures:

1. The below update wizard window will appear when you run the update module. Turn on the recorder and connect it to a PC and then click [Next].



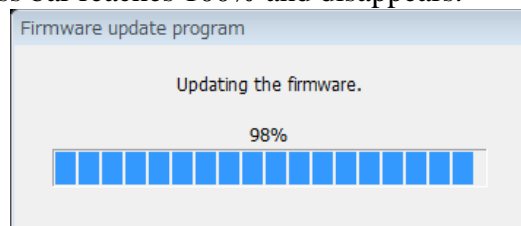


2. The DS-2500's LCD will display the battery setting selection screen. Push [EXIT] (the F3 button) to exit from the screen. The wizard will display the [Start] button once the connection is successfully established. Click [Start] to update the DS-2500.



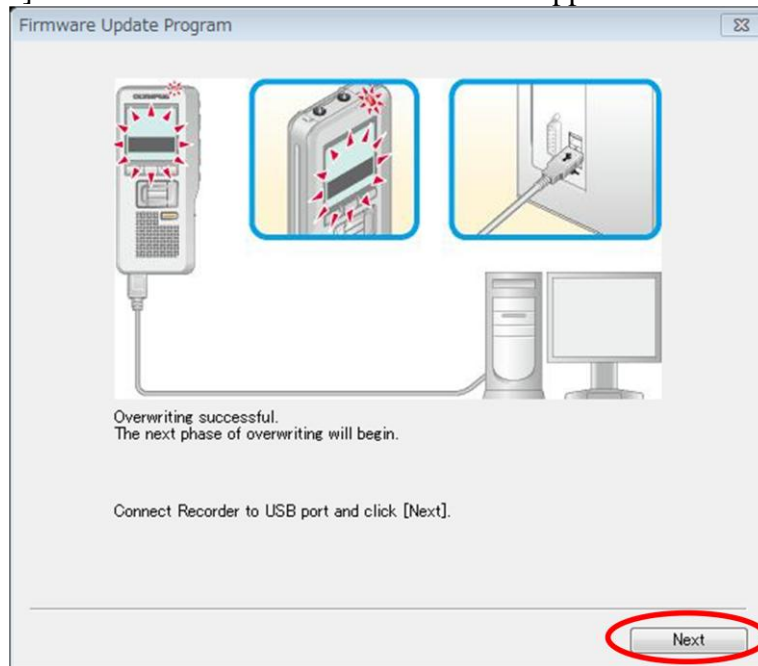
NOTE: The [Start] button won't be displayed unless you exit from the battery setting selection screen.

3. Wait until the progress bar reaches 100% and disappears.

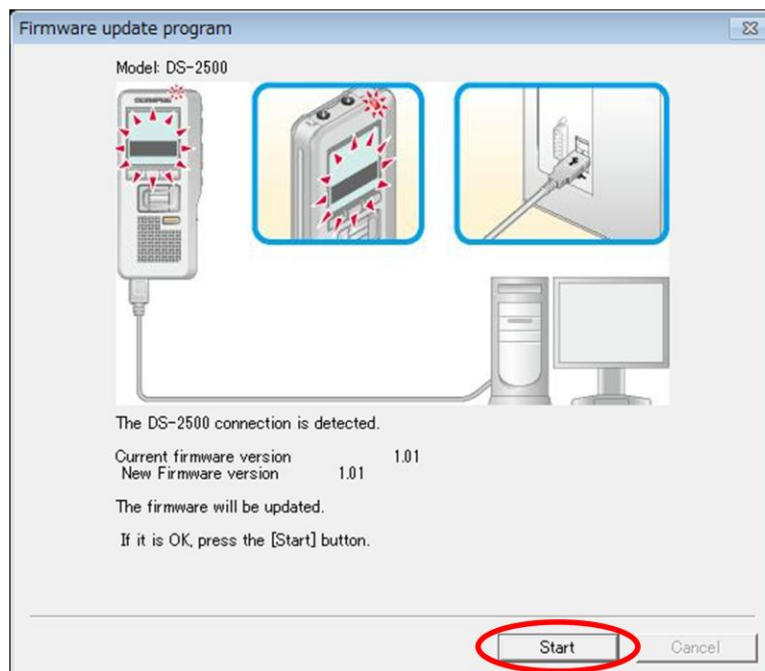




- Click the [Next] button once the below wizard window appears.



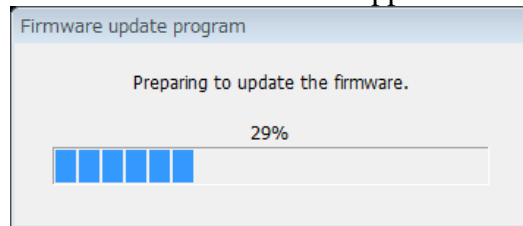
- The DS-2500's LCD will display the battery setting selection screen again. Push [EXIT] (the F3 button) to exit from the screen. Click the [Start] button of the wizard window to update the DS-2500.



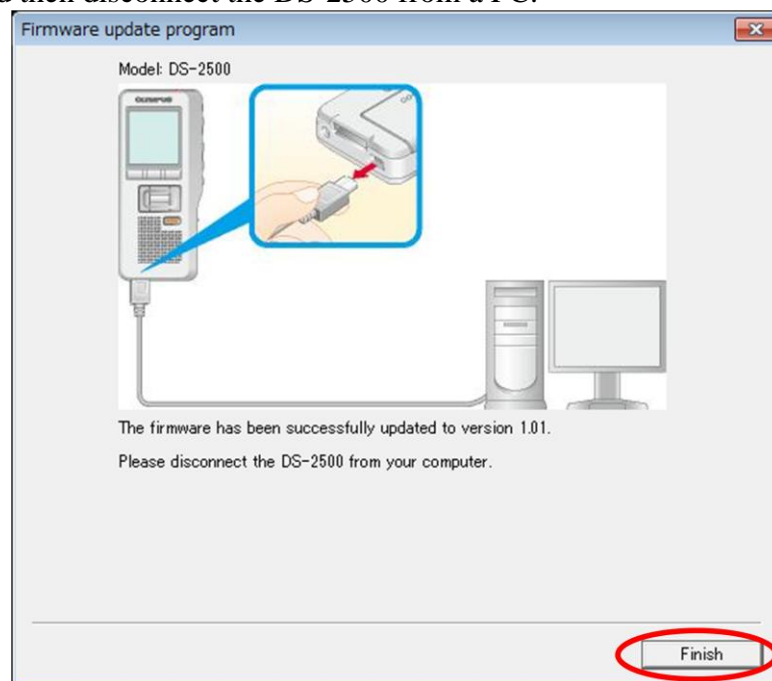
NOTE: The [Start] button won't be displayed unless you exit from the battery setting selection screen.



6. Wait until the progress bar reaches 100% and disappears.



7. The wizard window will then display the [Finish] button once the firmware update is completed. Click [Finish] and then disconnect the DS-2500 from a PC.





Confirming the updated Firmware version:

1. Turn on the DS-2500.
2. Press the Menu button.
3. Select the "System Info." in the "Device Menu".
4. Locate the firmware version.

